

YEAR 2019

CORE STATION 1002

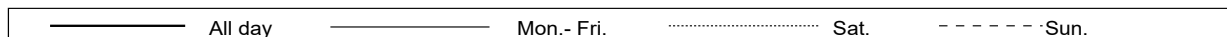
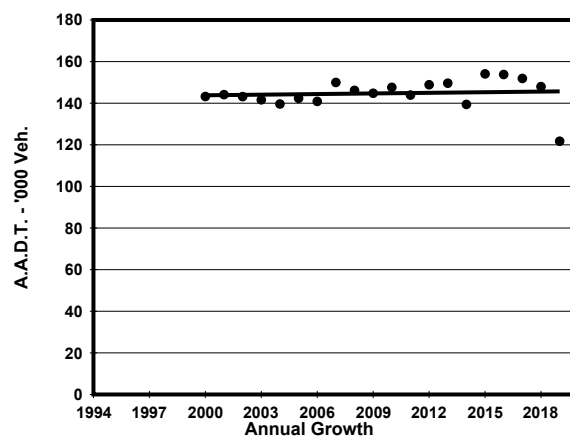
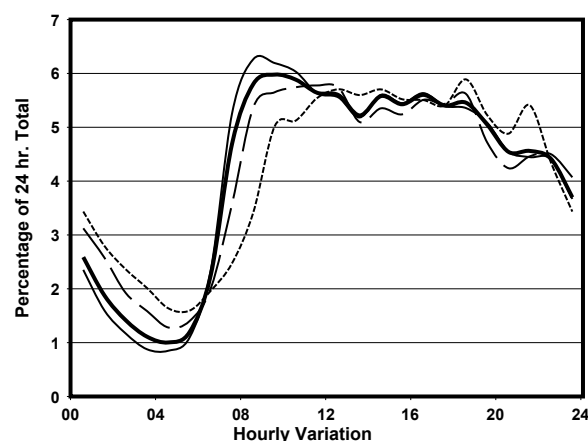
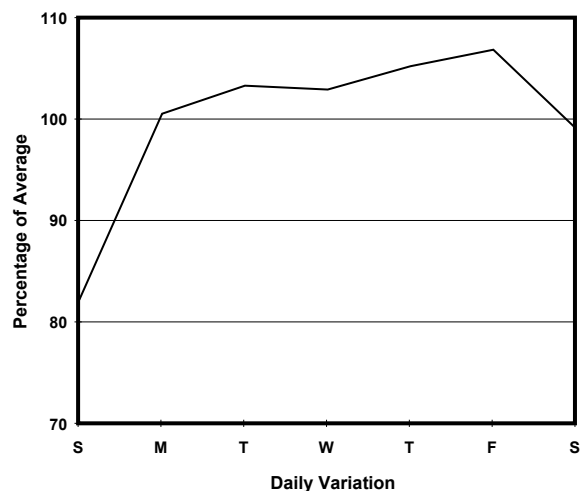
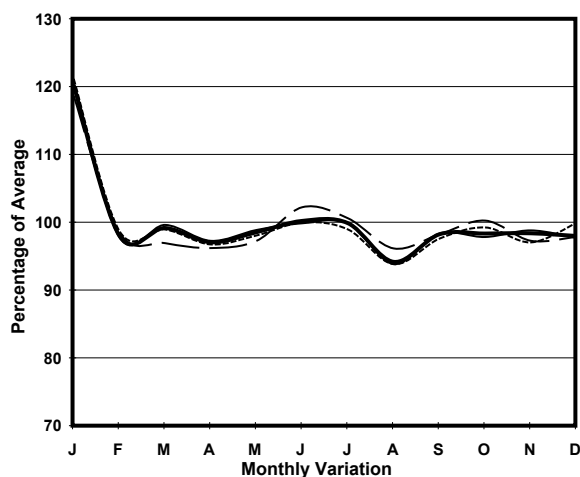
ROAD NETWORK MAJOR

ROAD TYPE URBAN TRUNK ROAD

LINK VICTORIA PARK RD (from GLOUCESTER RD to ISLAND EASTERN CORRIDOR)



## 1. TRAFFIC FLOW VARIATION AND GROWTH



## 2. TRAFFIC CHARACTERISTICS (BY DIRECTION)

Parameter	All - Day	Mon. - Fri.	Sat.	Sun.
<b>EAST BOUND</b>				
A.A.D.T.	56740	59240	56520	48420
R 12 / 24 - %	64.3	65.5	61	60.4
R 16 / 24 - %	84.4	85.7	80.6	80.9
AM Peak Hour	0900-1000	0800-0900	0900-1000	0900-1000
One-way flow at AM peak hour	3130	3480	2770	2260
T - % (AM)	-	10.2	-	-
PM Peak Hour	1600-1700	1600-1700	1600-1700	1600-1700
One-way flow at PM peak hour	3240	3380	3260	2770
T - % (PM)	-	6.6	-	-
Prop.of commercial vehicles - 16 hr.	-	6.7	-	-
<b>WEST BOUND</b>				
A.A.D.T.	65000	68380	65130	52410
R 12 / 24 - %	68	69.3	66.8	61.4
R 16 / 24 - %	85.3	86.3	83.3	80.7
AM Peak Hour	0900-1000	0800-0900	0800-0900	0900-1000
One-way flow at AM peak hour	4150	4520	4250	2800
T - % (AM)	-	11.4	-	-
PM Peak Hour	1800-1900	1600-1700	1800-1900	1800-1900
One-way flow at PM peak hour	3700	3810	3880	3260
T - % (PM)	-	10.8	-	-
Prop.of commercial vehicles - 16 hr.	-	8.6	-	-

## 3. OTHER INFORMATION AND COMMENT

**4. Vehicle classification and occupancy - Monday to Friday**

Time		Class of vehicle									
		Motor Cycle	Private Car	Taxi	Private LB	PLB	Goods veh.		Non Fr. Bus	Fr. Bus	
							Light	M & H		SD	DD
0700-0800	Pro	3.8	38.0	30.4	3.6	0.4	11.5	2.7	4.9	0.0	4.7
	Ocp	1.0	1.2	1.9	6.5	9.0	1.3	1.1	18.4	0.0	56.1
0800-0900 Peak hour	Pro	4.4	47.6	25.0	1.3	0.3	10.6	3.1	2.8	0.1	4.9
	Ocp	1.1	1.6	2.0	4.9	10.2	1.6	1.2	18.0	1.0	68.0
0900-1000	Pro	3.7	41.5	28.7	0.9	0.4	16.4	2.6	1.4	0.1	4.4
	Ocp	1.0	1.4	1.9	2.9	4.0	1.6	1.2	14.7	2.3	43.2
1000-1100	Pro	2.5	34.8	30.0	1.3	0.5	22.4	4.5	1.0	0.1	3.0
	Ocp	1.0	1.4	1.9	1.6	3.9	1.4	1.3	3.5	1.0	32.5
1100-1200	Pro	2.3	42.6	27.1	1.1	0.3	20.3	2.3	1.4	0.1	2.7
	Ocp	1.1	1.3	2.0	2.3	7.0	1.3	1.1	5.7	23.0	27.5
1200-1300	Pro	1.9	42.2	27.4	1.0	0.2	19.6	2.9	1.9	0.1	2.8
	Ocp	1.0	1.3	2.1	4.5	2.7	1.4	1.3	13.6	1.0	27.8
1300-1400	Pro	2.5	40.7	28.0	1.3	0.4	19.8	2.5	1.8	0.1	3.0
	Ocp	1.0	1.4	2.1	2.4	5.4	1.4	1.3	4.0	16.0	28.1
1400-1500	Pro	2.3	43.6	21.2	1.3	0.2	24.5	2.8	1.1	0.1	3.0
	Ocp	1.1	1.3	2.0	2.9	3.3	1.4	1.2	3.5	3.0	28.3
1500-1600	Pro	2.3	47.8	21.9	1.0	0.1	17.9	3.1	2.6	0.0	3.4
	Ocp	1.1	1.3	2.0	3.3	4.0	1.4	1.2	11.6	0.0	26.1
1600-1700	Pro	2.4	48.8	20.9	2.1	0.2	17.1	1.4	3.5	0.0	3.6
	Ocp	1.1	1.3	1.9	3.8	4.3	1.4	1.3	6.6	0.0	28.3
1700-1800	Pro	4.6	50.9	23.6	1.6	0.2	12.1	1.2	1.9	0.1	3.8
	Ocp	1.0	1.5	2.0	1.7	13.0	1.3	1.0	6.7	30.0	39.7
1800-1900	Pro	4.8	53.9	24.8	0.6	0.2	8.9	0.5	1.2	0.1	4.9
	Ocp	1.1	1.2	2.1	1.8	16.7	1.2	1.3	6.3	9.5	55.9
1900-2000	Pro	2.9	54.3	33.1	0.4	0.3	3.2	0.6	1.4	0.1	3.8
	Ocp	1.0	1.3	2.1	1.3	9.3	1.5	1.3	7.7	3.0	39.4
2000-2100	Pro	2.0	45.2	40.7	0.4	0.5	5.3	0.8	0.6	0.1	4.4
	Ocp	1.0	1.3	1.9	1.4	8.3	1.2	1.3	7.3	1.0	25.8
2100-2200	Pro	2.4	39.4	47.4	0.2	0.4	5.3	0.5	0.6	0.1	3.8
	Ocp	1.1	1.4	1.9	1.7	4.2	1.2	1.6	2.6	4.0	24.3
2200-2300	Pro	3.1	47.9	39.3	0.1	0.4	4.5	0.9	0.5	0.1	3.3
	Ocp	1.1	1.2	1.9	1.0	8.2	1.2	1.0	1.3	1.0	24.2
16 hours	Pro	3.0	44.9	29.1	1.2	0.3	13.9	2.1	1.8	0.1	3.7
	Ocp	1.1	1.4	2.0	3.5	6.9	1.4	1.2	10.8	5.3	38.8

**Legend: Pro.** Proportion of vehicles in % (Sum may not add up to 100% due to figure rounding)\*

**Ocp.** Average occupancy of vehicles including both driver and passengers\*

**M&H** Medium and Heavy

\* All traffic data are collected from combined bounds